



EWELL PARISH NEWS

The monthly newspaper of St Mary the Virgin Ewell

No. 605

June 2023

60p



Sharing the Love of Christ, the Light of the World, with the people of Ewell



St Mary's Ewell

www.stmarysewell.com

Garden Party

Saturday, 24 June



Vicarage Garden

2:30-4:30 pm

Tickets £5 on sale after services

CONTENTS

Fr Mark Stafford writes.....	2 & 3
AV/Sound desk.....	3
From the Parish Registers.....	4
June Concerts.....	4
St Mary's on-line quizzes.....	4
Toddler Group.....	4



Prayers for June.....	5
Royal Connections review	5
June Garden Party.....	5
Can you support David Boosey?...6	
Ladies Night Out.....	6
St Mary's ECO Group.....	6
PCC report.....	7
Coronation Garden Party.....	7
Foodbank.....	7
Ring out the Bells.....	7
Put out the Flags.....	8
Mamma Mia.....	8
Jazz on the Lawn 2.....	8



Ewell Village Fair.....	9
Grand Draw tickets.....	9
Cake Competitions.....	9
Children's page.....	10
Calendar for June.....	12

COPY FOR THE NEXT EDITION: Please email EPN copy to: epn@stmarysewell.com. Handwritten or typed copy will only be accepted by prior agreement (call 020 8393 4804). Please do not embed photos in WORD files, but send the images separately. Copy date for the July 2023 edition is noon on Monday 12 June.

Fr Mark Stafford writes

Well, its official, I now weigh 14 stone; this is an increase of one stone compared to this time last year. Now this news can be either good news or bad news depending on your perspective.

For many in the western world, putting on a few pounds is a terrible thing and is addressed by Atkins, Ketogenic, Paleo, Low-Carb and Vegan diets. Or even more invasive tucks and treatments.

On the plus side my additional ballast has smoothed out some of the wrinkles, although I am sure when I go to the surgery for my next medication review, they will suggest that I should eat less and do more exercise, but for many people around the world having enough food to enable them to put weight on would be a great blessing.

We have spoken once before about food and food waste, maybe as summer really begins and we think about dusting off the BBQ, and re oiling the patio furniture, we might also consider how much food we buy compared to how much food we eat?

Often the BBQ season is one for over-shopping and maybe not eating all we buy and all we cook. After all do we really need 4 types of burgers, 20 different types of marinated chicken and lamb? Maybe this is the year we should step away from the grill and consider changing our shopping habits. Can we be more precise with our buying and eating ratios? Can we look to buy more Fairtrade goods? Can we eat a leaner, cleaner diet? Maybe less meat and more plant-based foods?

On 24.1.2020 the Independent reported that, "... UK households are continuing to waste 4.5m tonnes of food annually, which it estimates to be worth £14bn - the equivalent to £700 a year for an average family with children".

This seems like a huge waste to me, not just of food, but of our hard-earned cash too. The reality of the waste is greater than the food waste, we need to also consider the wasted water, time and energy in the production and farming of the food. The wasted energy in transporting the food, and the associated carbon pollution. We need to think about the wasted packaging and retail environmental costs, not to mention the disposal costs! The list is quite extensive when we think about the total costs of food waste, and I am sure there are other costs I have not considered.

Whilst I may think that putting on a few pounds in my late 50's is understandable, I justify it by blaming my painful knees, which means I exercise less vigorously and less frequently, therefore I am becoming a larger mammal, however I am sure that the reality is more likely to be related to having the study so close to the kitchen, which means that during the day the fridge light is on and off so often the kitchen looks like a night club!

As I am sure that my GP will soon be saying, maybe I should be thinking about eating less and doing more? And maybe this is something we should all be doing for if

St Mary the Virgin EWELL PARISH CHURCH 020 8393 2643

Website: www.stmarysewell.com
Registered Charity Number 1128409

CLERGY

Vicar: Fr Mark Stafford 020 8393 1297

Email: vicar@stmarysewell.com

Day off: Friday

Assistant Priest: The Reverend Sue Ayling OBE;

020 8337 6347; Email:

assistantpriest@stmarysewell.com

Day off: Wednesday

READER

Mrs Wendy Varney 020 8393 5212

CHURCHWARDENS

Mrs Valerie Wood 020 8393 5991;

Email churchwarden1@stmarysewell.com

Mr Nicholas Allsopp 07899 818400;

Email churchwarden@stmarysewell.com

Pastoral Assistant

Mrs Wendy Paxman 020 8224 2851;

Email: pastoral@stmarysewell.com

Safeguarding Officer

Mrs Helen Crossley;

Email: safeguardingofficer@stmarysewell.com

Diocesan Safeguarding Advisor

Jackie Broadfoot 07918 559387;

Email: jackie.broadfoot@cofeguildford.org.uk

Finance Officers

Day-to day financial queries

Donna and David Boosey 07791 993261;

Email: financeteam@stmarysewell.com

Stewardship Recorder

Mrs Sarah Holmes;

Email: plannedgiving@stmarysewell.com

THE PARISH OFFICE

Administrator:

Mrs Lynne Yuille 020 8393 2643 (Office)

Office email: parishoffice@stmarysewell.com

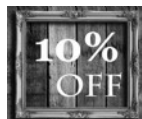
The postal address is: St Mary's Ewell Parish Church, London Rd, Ewell, Surrey, KT17 2AY.

The Parish Office is on the south side of the church.

The Parish Office is closed to visitors at present. Please telephone or email instead.

HANDMADE PICTURE FRAMES

All Frames -
made in Our Studio
Free local collection
& Delivery



**With this
voucher**

M: 07748 712133
25 The Headway
Ewell Village

www.handmadepictureframes.jigsy.com

Christine Hardy Soft Furnishings

Handmade curtains, blinds,
cushions and much more.

Measuring, estimating and,
if wanted, time spent
finding the right fabric,
all come free!

Recommendations provided

Telephone: 020 8393 1222

Val Burrell

South African Professional

Private live in Carer Companion

Personal assistant.

Five years experience, excellent
references.

Looking for a position in

Surrey from 3rd June 2023

vburrell62@gmail.com

077 220 55802

we reduce food waste, we reduce carbon emissions, we reduce our impact on the planet's limited resources, which will hopefully mean more to go round, and we also start to reduce our waistlines!

WHAT'S ON IN JUNE

Mission Action Plan parish meeting – 4 June following 9:30 Communion service.

As lots of you will be aware we have been looking at renewing our Church mission action plan. We have surveyed the congregation, met with the groups and people providing services to the Church and on June 4, Trinity Sunday, we will pull all these strands together and create a 2-year plan of mission and ministry. The plan will look at our finances, the way we “do” Church, our outreach into the community and how we care for one another and the wider world. Please come and join us and be part of our new normal!

5 June Home Communion

On the first Monday of each month we take Holy Communion to the care homes in our parish. If you would like to receive Holy Communion at home, please speak to Fr Mark and this can be arranged.

10 June Mamma Mia!!

Calling all ABBA fans. Following on from the great success of the singalong Sound of Music, on 10 June we will be hosting a singalong, Mamma Mia, here in Church. Tickets on sale now either in Church or on Eventbrite.

13 June Lunchtime Bach Tuesday recital

Come and join us for our Lunchtime Bach Tuesday recital from 1.05pm – 1.35pm featuring the major Preludes and Fugues. Tea, coffee and refreshments to follow.

15 June Bereavement Café

2:45pm – 3:45pm in Ewell Hall (opposite the Church). Bereavement Café offers a chance to meet with others who understand the experience of loss. Bereavement Café is a space to talk about the pain of bereavement, and find mutual support and encouragement, when you need it most.

17 June 7.30pm Jonathan Holmes plays Max Reger

Reger's kaleidoscopic magnum opus, the Mahlerian-like Op 73 Variations on an original Theme.

21 June On-line Quiz

Our next on-line quiz using Zoom is on Wednesday 21 June at 8.00pm. If you have not joined one of our on-line quizzes, then do consider it this month. Our quizzes really are great fun. You will need to register using a link that will be given in the Weekly Notes nearer the time, or you can email zoom@stmarysewell.com.

24 June Vicarage Garden Party

Come and join us for a delicious cream tea at our annual summer garden party between 2:30pm and 4:30pm. Tickets cost £5 and are on sale after Sunday services.

Apart from the items mentioned above, do check the Calendar on the back page for the full list of services and events happening in June.

Every blessing

Fr Mark



WA TRUELOVE & SON LTD
INDEPENDENT FAMILY FUNERAL DIRECTORS
& MONUMENTAL CRAFTSMEN SINCE 1885



Serving the local community

- 24 hour call out service
- Monumental masonry
- Home visits available
- International repatriation
- Horse-drawn funerals
- Pre-paid Funeral Plans



EPSOM 01372 723337

14/18 Church Road KT17 4AB

epsom@watltd.co.uk

www.watltd.co.uk

Branches throughout the North East Surrey Area

AV/SOUND DESK AT ST MARY'S

We continue to seek volunteers to learn how to operate our AV/sound desk and to join the team helping with livestreaming/videos at our services.

This is a vital part of our outreach so if you think you may be able to help, please contact the churchwardens, our clergy or John Larkin.

FROM THE PARISH REGISTERS

HOLY BAPTISM

At the font we were marked with the
Cross on our brow, of our grace and
our calling the sign. (AMR 541)

23 April Nancy Emma Mary Hughes

FUNERALS

Let light perpetual shine upon them

10 May Hilda Ridgway, aged 92

16 May Mervyn Poynter Bingham, aged 59

Ashes Interment

30 April Edward Osborn, aged 88

St Mary's Toddler Group

Thursday mornings in term time

10-11.30 in Ewell Hall

For information:

Please phone 020 8393 4804

or see St Mary's website



ST. MARY'S ON-LINE QUIZZES



We hold monthly on-line quizzes using Zoom

These are very popular and fun for all the
family. Why not join us?

Our next quiz will be on Wednesday June 21.

As always, you will need to register beforehand.
You can use links provided in the Weekly Notes or
you can also register by emailing

zoom@stmarysewell.com.

Local Video Transfer Service

Get your old video recordings transferred to files, so
that you can view them again, and keep them safe
for the future

Contact me, **Laurence**, for advice on the options
you have.

Telephone: 07763 776 031

e-mail: laurence.green9@gmail.com

JUNE CONCERTS

June 13 at 1.05 pm

Free Tuesday lunchtime Bach organ recital

Jonathan Holmes

June 17 at 7.30pm

Jonathan Holmes plays Max Reger

Reger's kaleidoscopic magnum opus, the Mahlerian-
like Op 73 Variations on an original Theme

Admission to the Saturday Concerts is a £10 suggest-
ed donation for over 18s. The Tuesday concerts are
free and are followed by afternoon tea.

Every penny raised goes towards restoration of the
Willis organ.



Greenfield

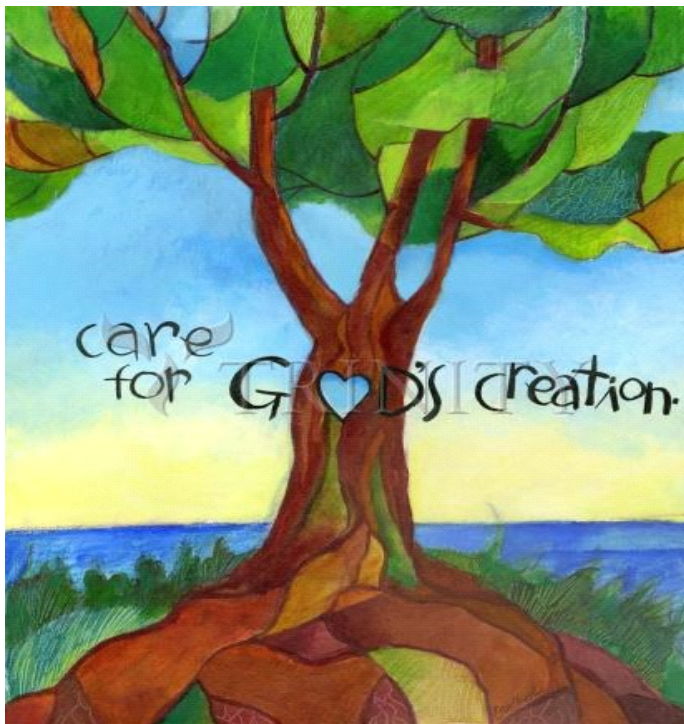
Independent, family run estate agents, specialising in
all aspects of residential and commercial property
sales, lettings and management



020 8393 0077
www.greenfieldewell.co.uk

55 High Street
Ewell Village
Surrey KT17 1RX

Prayers for June



As this Springtime and Summer continues to unfold,

Creator God, we pray that you will fill each one of us with love for the whole of your creation. Awake in us a thirst and energy to work tirelessly to maintain the world as you would wish it to be.

Help us to consider the lost lilies, the disappearing sparrows; teach us not to squander earth's precious resources; help us to value all earth's many habitats and seek to preserve this world in all its diversity.

Help us to find ways to use earth's resources wisely and to find a path to good, sustainable living. Help and inspire us and all those who work to find solutions to the damage and decay that our thoughtlessness has brought about that once again we may live in harmony with all of creation, just as you intended.

AMEN



GARDEN PARTY

The next garden party organised by our Social Committee will be held in the Vicarage Garden on **Saturday 24 June** from 2.30 to 4.30 pm.

Do join us to enjoy a delicious cream tea.

Tickets cost £5 and are on sale after services

ROYAL CONNECTIONS

St. Mary's Parish Choir

Simon Gregory (organ)

Jonathan Holmes (conductor)

Saturday 22 April

To celebrate the dawning of the new Carolean era, the Parish Choir presented a varied programme, including music associated with previous coronations. Thanks go to Julia, Liz and their helpers for running the box office and refreshments.

The evening began with a bang. Without a shadow of doubt, the finest coronation anthem in the repertoire is *Hubert Parry's* monumental setting of Psalm 122, **I was glad when they said unto me**. Commissioned for the coronation of King Edward VII in 1902, this piece stands out in English musical history for an unlikely reason. It received two first performances. What happened? The story is, that when it came to the actual coronation, the then Director of Music at Westminster Abbey, Sir Frederick Bridge, was unable to see the west door where the King was supposed to enter. He therefore arranged for someone to give him - Bridge - a signal when the King arrived, so that he could give Walter Alcock, the organist, the cue to begin. By some oversight, however, the signal was given too soon; they performed the anthem only to be told that the King had not yet arrived. When the King did finally arrive, they had, of course, to sing the anthem a second time, one hopes without further mishap.

King Edward VII was succeeded by George V at whose coronation, in 1911, 'I was glad' was performed again, this time in Parry's revised version. For this same occasion, *Edward Elgar* composed an **Imperial March**, an organ solo played today by Simon Gregory. The choir now took over, in a performance of **Three Latin Motets for unaccompanied choir** by *Charles Villiers Stanford*. Note these motets - short anthems - were not written for any coronation. The truth is unclear; it is most probable that Stanford wrote them for Trinity College Chapel choir, in Cambridge, and their director Alan Gray (who succeeded Stanford at Trinity). The titles of the individual motets are: *Justorum animae* 'the souls of the righteous are in the hand of God'; *Coelos ascendit hodie* 'to-day Jesus Christ has risen to Heaven' - an Ascension Day anthem; and *Beata quorum via* 'Happy are they who are upright in the way'.

Moving to a more modern era, during the course of his long life, *William Walton* wrote two coronation organ voluntaries which have since become classics of their kind: **Crown Imperial** (King George VI 1937) and **Orb and Sceptre** (Queen Elizabeth II 1953). Simon played both of these tonight. The stirring strains of 'Crown Imperial' brought us to the interval.

Hushed, reflective music for choir and organ opened the second half. **O Hearken Thou** was written by *Elgar* for the 1911 coronation, to fill the gap while King and Queen were receiving Holy Communion. Now, the mood changed completely when the choir - accompanied by Simon on grand piano - leapt into the twenty-first century with **A Little Jazz Mass**. The composer *Bob Chilcott* is one of the leading musicians in Britain today. His Jazz Mass unusually combines the traditional Latin texts with a variety of jazz idioms. After the aforesaid 'Orb and Sceptre', the concert concluded on another high note - **Zadok the Priest** which is one of the anthems that *Handel* was commissioned to write for the coronation of King George II in 1727 at Westminster Abbey.



DAVID BOOSEY WRITES ABOUT COM- PLETING THE BANHAM MARCH

Last Sunday 15 May, I was delighted to take part in the Banham March. This is a sponsored walk which raises money for The Royal Marsden NHS Foundation Trust.

It was a lovely day, walking 15 miles in mostly sunshine, from The Royal Marsden Hospital in Chelsea to The Royal Marsden Hospital in Sutton.

The event has been running for many years and has raised millions of pounds for these specialist cancer hospitals.

Together, The Royal Marsden and the neighbouring Institute of Cancer Research are ranked in the top five cancer centres in the world for the impact of their research, treating over 59,000 NHS and private patients every year.

I was moved by the numbers of people marching from all walks of life who were united in remembering those they love that have been impacted and lost to cancer. All coming together for a good cause that helps the people who work at The Royal Marsden improve the lives of so many in our communities. It was particularly heartening to be serenaded by well-wishers honking their car horns as we approached our final destination, with the hospital clearly being a source of pride and hope for the local community here.

If you would like to make a donation and sponsor my walk, you can do so through this link:
<https://tinyurl.com/3m7mnmsn>.

David Boosey

LADIES NIGHT OUT

A great evening was had by lots of us in the church hall on 19 April, hosted by Lucy, Fr Mark's wife. We had all signed up to bring a contribution towards the food & drink and were totally indulged with a delightful and delicious array of food.



From chilli, chicken curry, salmon en crouete, garlic bread through all sorts of amazing salads & sides, to even the delicious but different Coronation Quiche! Then there were the puddings- lemon tart, meringues, red berries, cheesecake, chocolate roulade, cakes, jam tarts, cheese etc..... I feel absolutely full just reading this! What a talented group of home cooks.

The layout in the hall meant that everyone could move around and chat to old and new friends of St Marys and the atmosphere was so convivial. A huge thank you to all those who mucked in to help wash up & clear up, and especially to Lucy for organising the whole event.

LM



ST. MARY'S ECO GROUP

Invitation to take action for nature

You may have been in church over the Coronation weekend and heard the talk from the Surrey Wildlife Trust inviting the congregation to take action for nature. What better way to celebrate our new King, who has dedicated so much of his life to conservation?

Current figures relating to the biodiversity crisis make for gloomy reading – with 1 in 7 species at risk of extinction in Surrey alone. Particularly affected are our wildflower meadows, with 98% lost since the 1950s. To help combat this decline, we would like to see actions go beyond the church boundary and into our streets, gardens and community spaces. Here are some ways that you can get involved.

- Leave part of your grass uncut for at least 4 weeks and enjoy seeing daisies, speedwells, dandelions, birdsfoot trefoil and yarrow start to bloom.
- A lawn that has been fed and tended to for years may need a little help diversifying. To encourage native plants you may wish to remove patches of turf and plant wildflowers amongst the grass as 'plug plants'.
- This September you could consider removing turf along with the nutrient rich top layer of soil (where commercial grasses thrive) and reseed the area with a mix of native wild flowers – there are a number of good seed sources available online.
- If you have a flower bed or pots, plant them up with pollinator friendly plants and create a 'pollinator pit stop' – most herbs such as lavenders, mints, chives, rosemary, thyme and oregano are fantastic for bees, cope with drier conditions of pots and are great additions to your cooking.
- Commit to going chemical free in your garden, let natural predators such as birds, hedgehogs and toads do the slug and aphid control while welcoming the weeds.
- Always use peat free compost.

We understand that long grass can look untidy or make the garden look abandoned. This can be avoided by mowing neat paths through the lawn, or just allowing a strip of your lawn to grow wild with the rest mown a little less frequently than usual. If it's a community garden or a verge in public view, why not place a blue heart with a sign letting passers-by know it is being left for the bees. Don't abandon cutting all together – all meadows need to be cut in late summer/ early autumn to prevent brambles taking hold. But always check for hedgehogs and other small creatures first! When you do cut, allow a few days for any seeds to fall before removing the clippings. The following Spring, an early cut with the blades set high, knocks back the grasses and allows the wildflowers a chance to get going.

<https://www.surreywildlifetrust.org/actions/how-grow-wild-patch-or-mini-meadow>

And if you do join the No Mow initiative, welcome to the team! Let Surrey Wildlife Trust know about your actions for nature by plotting it on the 'Team Wilder' Map:
<https://www.surreywildlifetrust.org/act-wildlife/team-wilder>

If you have an ECO tip or would like to join our ECO Group we would love to hear from you. Please get in touch with Sue Ayling at: assistantpriest@stmarysewell.com or 020 8337 6347.

REPORT FROM PCC MEETING 2 MAY

Fr Mark reported that all seven Mission Action Plan forums have now been held and have been very productive. This means that stages 1 and 2 of the process are now complete.

For stage 3, points from all the forums will be collated and the whole church congregation will be invited to come together on Trinity Sunday, June 4 to plan the way forward.

Members approved the Annual Report and financial statement for 2022. This will be presented to the congregation at the APCM on Sunday 21 May.

The meeting also approved the Health & Safety and Whistle-Blowing Policies. Work to update the Staff Handbook is in progress.

It was agreed that repairs to the cracking chancel floor will begin in August when they will cause the least disruption. However, the exact cost of the repairs will not be known until the tiles are removed. Every effort will be made to match the replacement black and white tiles with the existing.

The next meeting will be held following the APCM on Sunday 21 May 2023.

Liz Divall, PCC Secretary

EPSOM & EWELL FOODBANK

Our local foodbank relies on your goodwill and support. 3,000 people have already been supported this year, which is 65% more than the same period in 2022. Your food donations are vital – please help if you can.

Urgently needed: Cooking sauces, tinned vegetables, tinned sweetcorn, tinned meat, rice pudding, tinned fruit, coffee, long life sponge puddings, ketchup / brown sauce / mayo, chocolate spread, UHT milk, powdered milk, deodorant, shampoo / conditioner, nappies sizes 5+, 6 and 6+.

Please no more of these items as we are fully stocked: Pasta, dog / cat food, Tinned soup.

We would also appreciate any bags for life/very strong bags!

You can donate at St Mary's Church Ewell, Sainsbury's Kiln Lane, Waitrose Epsom and Banstead, Asda Burgh Heath and Tesco, Leatherhead, or directly to Epsom & Ewell Foodbank, Good Company Hub, (Behind West Ewell Primary School), Ruxley Lane, Ewell KT19 0JG. Open Monday to Friday 9am - 2pm excluding Bank Holidays.

You can sign up to the Foodbank newsletter on their website at www.epsomewell.foodbank.org.uk

*** Please make sure all donations are sealed, in date and do not contain alcohol ***

CORONATION GARDEN PARTY AT THE VICARAGE



Having sung the National Anthem at the close of the morning service on 7 May, about 50 parishioners were back at lunchtime for a picnic in the vicarage garden to continue the celebrations marking the coronation of Charles III and Queen Camilla. Luckily today the sun shone, not like the previous day. The sunshine was a bit watery at first, but improved as the day progressed.

The garden looked beautiful and Mark's vegetables were doing well. There was a bar, with neon light, set up to one side and various games for all placed around the lawn. Everyone was supposed to bring their own picnic, but there was also a table in the centre of the lawn where communal food was spread, including the famous Royal Coronation Quiche!

Thank you, Lucy and Mark, for inviting us to your garden again and being such welcoming hosts. See you at the garden party cream tea on Saturday, 24 June.

GOD SAVE THE KING

JMD

BACK BY POPULAR DEMAND!

Saturday 30th September
12 noon to 4.30pm

A Day For All
Ring out the Bells!



As well as the usual craft activities, free refreshments through the day and a special display of handbell ringing and an invitation to 'have a go', there will be a talk about Animal Assisted Therapy and the work done by Kingswood Shetlands & Friends to help improve peoples mental, physical, social and emotional functioning with the aid of animals. The Shetland ponies and their animal friends will be in the churchyard to enjoy - as they were last year.

Any queries to adayforall@stmarysewell.com or to Sue on 020 8337 6347.

PUT OUT THE FLAGS DINNER 13 May

Once again, we have had the pleasure of a wonderful evening organized by our amazing Social Committee. A fabulous meal - centered around the Coronation of course - and accompanied by the usual fine wines, delicious and very fattening sweets and irresistible cheese and biscuits. A big thank you ladies.



The evening began with the Loyal Toast, and a rendition of the National Anthem followed with grace, said by Sue Ayling.

Jenny entertained us with 'Changing of the Guard' and Valerie did a very complicated and amusing rendition of 'The Kings Breakfast'.



Each table was then given copies of a quiz which really did exercise our brains! There was a tie between two tables for first place and the winners were decided by the tossing of a coin. Well done!

The evening concluded with the hearty singing of Rule Britannia and various other well-known patriotic melodies. Many thanks to Jonathan and Tim for leading the singing.




**MAMMA MIA!
SING-ALONG**

**ST MARY'S CHURCH
LONDON ROAD, EWELL**

Saturday 10th June 2023

Doors open at 6:30pm for 7:00pm

Adult ticket price £10, with a glass of fizz,
Children £5, additional fizz will be sold if
needed!

Dress to impress like it's 1970

**Tickets available in Church
and on Eventbrite**

ST MARY'S CHURCH, EWELL

JAZZ ON THE LAWN 2

Saturday August 19th
12:00 noon - 3:00pm

The Vicarage 14 Church Street, Ewell
£10 adults, £5 children to include a burger
and a drink.

Processco bar. Bring your own picnic.
Tickets on Sale in Church and on Eventbrite.
<https://JazzontheLawnEwell2.eventbrite.com>

++

Florie is a Jazz-pop singer who fuses 1940's
vocal Jazz singing with Beatlesque melodies





Saturday 15 July 10.30 - 4pm

**Glyn House Grounds
Ewell Castle School**

**Admission £2.50
under 12s free**

St. Mary's is once again in the throes of organising the Annual Ewell Village Fair – a highlight of the year. There will be the usual variety of arena events. By popular demand there are return visits from the Southern Golden Retriever Display Team and the Paladins of Chivalry, with Medieval re-enactment and combat display. We will also have Razzle Dazzle Dance Fitness, Nordic Walking, the Phillomena Dance School and the Sing out Sutton choir. The Army Reserves will be on site. All the fun of the traditional fair will include a coconut shy, Punch and Judy and a bouncy castle/inflatable assault course. There will be plenty to entertain both young and old plus those in between.

There will be a BBQ serving burgers and for those who fancy something different Dhansiri will be providing Indian Cuisine. Enjoy award-winning artisan Italian ice cream or you can buy doughnuts from Krispy Kreme. Our Beer Pavilion will be offering beer, wine, Pimms, craft gin & tonic as well as soft drinks. Tea and coffee will be available all day. As usual there will be side-shows and a wide range of stalls including cakes, books and music, bottle tombola, plants, bric-a-brac, toys and games, balloons, jewellery and craft. Our Guides and Brownies will be offering face-painting for children and the 3rd Epsom Scouts a Crazy Kitchen crockery smash activity. *Don't forget to bring some cash!*

The Grand Draw has lots of great prizes and there is also a Lucky Programme Draw. Maybe you could sell some Grand Draw tickets prior to the day? They are available now in church or from the organiser.

There will be a baking competition for adults and two age groups for children - one to bake and decorate & for the younger ones to decorate only. Further details and forms can be found on our website and forms can also be collected from the Church on Sundays.

The church will be open all day and there will be short choral performances and recitals on our wonderful Father Willis organ.

The event will commence with the Ewell St. Mary's Morris Men and four guest sides dancing outside the Green Man at 10 am before leading our MP, Chris Grayling, to the eighteenth-century Watch House to 'refresh the wastrel'. They will then progress to the Fair at Ewell Castle School's Glyn House site. The Fair doors open at 10.30 and Chris will formally open the Fair at 11am. The Morris Men's first dance and their Grinning through the Horse's Collar competition, which is always great fun, will be at 11.30. The Bishop of Guildford will also be in attendance for some of the day

As with any large event, offers of help and donations for the stalls are still needed, including help with refreshments. If you feel you may be able to help in any way, please contact the chair of our Fair Committee, Harvey Morris tel. 07775 865303, email fair@stmarysewell.com or Fr. Mark. Donations for the following stalls can be left in church from Sunday 2 July.

Books and Music	Bottle Tombola,
Bric a Brac	Jewellery
Plants and Toys	

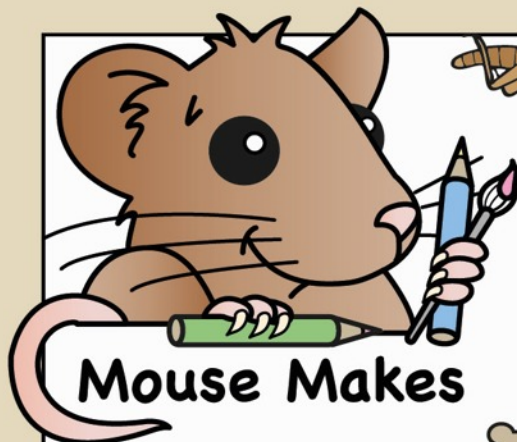
GRAND DRAW TICKETS

You will have received two books of tickets with the May edition of the Ewell Parish News in the hope that you will be able to sell some tickets on our behalf. We have cash prizes, tickets for days out, vouchers for meals out and lots of other exciting prizes. If possible, cash and counterfoils should be returned by Saturday 8 July 2023 to either your EPN distributor or direct to the promoter (name and address are on the tickets) or placed in the blue box at the back of Church. We understand that not everyone will be able to buy or sell tickets, but we will be most grateful if you can help with this fund raising project.

CAKE COMPETITIONS

Can you bake a delicious Victoria Sponge? Or, if you're between 12-16 why not have a go at baking and decorating some cupcakes? For the younger kids, just let your imagination run wild and decorate some plain cupcakes. Choose your own theme.

Entry Forms are available in church or can be downloaded from the church website. Please submit them by Sunday 9 July – they can either be dropped off at church or emailed to flowers@stmarysewell.com. Judging is at 12 noon on the day of the Fair.



The Lord said to Moses,

*"Your brother Aaron shall tell Pharaoh
to let the people of Israel go out of his land...
The Egyptians shall know that I AM the Lord
when I stretch out my hand against Egypt..."*

As Pharaoh's heart was hardened against the
Israelites, God sent ten plagues upon him...

1

Water turns to Blood

Which water turned
to blood?

Read - Exodus 7:19

2

A Swarm of Frogs

In which
places were the
frogs found?

Read - Exodus 8:3-4

3

A Plague of Gnats

When Aaron struck his
staff on the ground
what became Gnats?

Read - Exodus 8:16-17

4

Swarms of Flies

In which land were the
flies not be found?

Read - Exodus 8:22

5

Death of Animals

Which animals that belonged
to the Egyptians died?

Read - Exodus 9:2

D F G B O I L S L
L S O O T O P I B
A W D P E O P L E
N A N I M A L S A
D R S N G N A T S
U M I D N I G H T
S S T A F F U U O
T A A R O N E N O
D E B K D F S D G
T M A N W A T E R
M O S E S R W R O
C R F S N I L E U
F I R S T B O R N
I V O K N L C F D
R E G H W O U I E
E R S A K O S S A
H W I N D T H T
I L F L I E S E H

GOD • PLAGUES • MOSES • AARON
WATER • BLOOD • STAFF • RIVER • NILE • FISH
FROGS • SWARM • GNATS • DUST • FLIES
GROUND • DEATH • ANIMALS • SOOT
BOILS • PEOPLE • HAIL • THUNDER • FIRE
MAN • BEAST • LOCUSTS • WIND • LAND
DARKNESS • FIRSTBORN • MIDNIGHT

6

A Break out of Boils

What did Moses throw into
the air before boils appeared
on people and animals?

Read - Exodus 9:10

7

A Rain of Hail

What also rained
down with the hail?
Where did it not hail?

Read - Exodus 9:24-26

8

A Swarm of Locusts

Where did the wind
come from that brought
the locusts to the land?

Read - Exodus 10:13

9

Darkness over the Land

How many days did
it remain dark?

Read - Exodus 10:21-22

10

Death of the Firstborn

At what time would the
firstborn in the land die?

Read - Exodus 11:4-6



All roofing and guttering repairs
30 years experience covering
Worcester Park and close by

Valleys, Bays etc.

All new work guaranteed

Free estimates

Special rates to O.A.P.s

J L Hellings & Son

Tel: 020 8788 1459
100 Kingsmead Avenue
Worcester Park KT4 8UT



Alan Greenwood & Sons

Independent Family Funeral Directors

www.alangreenwoodfunerals.com

The Funeral Service that caters for everyone's needs

- A choice of the latest Jaguar or Mercedes Hearses and Limousines
- Home visit arrangements
- Pre-paid funeral plans
- Memorials
- Quality Service 24 hours day

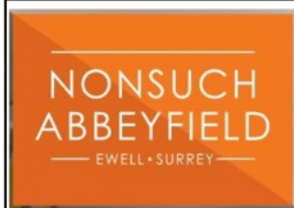


The Greenwood Family are directly involved in the running of the Company, ensuring that your wishes are carried out with the utmost dignity and precise attention to detail.

83 High Street, Ewell Village, KT17 1RX **020 8393 0197**

425 Kingston Road, Ewell, KT19 0BT **020 8786 7476**

706 London Road, North Cheam, SM3 9BY **020 8150 9525**



Abbeyfield Southern Oaks - Independent living with care - Ewell

Stylish new one- and two-bedroom apartments to purchase or rent
 Restaurant cinema club-room lounges fitness suite "What's not to like?"

Phone 020 8393 0050 Email admin@abbeyfieldsouthernosaks.org

Nonsuch Abbeyfield Old Schools Lane Ewell KT17 1FL Charity no 247308



Abbeyfield Southern Oaks - Supported Sheltered Houses for over 65s

The Old House Ewell Village. Affordable with comfort and companionship
 Home-cooked lunch and supper, furnish your own room. off-road parking.

Phone 020 8393 0050 Email admin@abbeyfieldsouthernosaks.org

Nonsuch Abbeyfield Old Schools Lane Ewell KT17 1FL Charity no 247308



ALFRED & EWART LONGHURST

FUNERAL DIRECTORS AND MONUMENTAL MASONS

- A complete, caring professional service
- Estimates and advice freely given for funerals and memorials
- Flexible pre-paid funeral plan - details on request

21-23, KINGSTON ROAD, EWELL

020 8393 1077



Calendar for June



Morning Prayer will usually be celebrated at 0900 Monday to Saturday and shown online

- S 04 TRINITY SUNDAY**
 0800 Said Holy Communion (BCP) (Lady Chapel)
 0930 Jesus and Me (JAM) (Hall then Church)
 0930 Sung Holy Communion
 1115 Mission Action Plan Meeting with Congregation in Church
- T 06** 1000 Said Holy Communion (Lady Chapel)
- Th 08 CORPUS CHRISTI**
 1000 St Mary's Toddler Group (Hall)
 2000 Holy Communion
- S 10** 1830 for 1900 Sing-Along Mamma Mia! in Church
- S 11 TRINITY 1**
 0800 Said Holy Communion (Lady Chapel)
 0930 Jesus and Me (JAM) (Hall then Church)
 0930 Sung Holy Communion
 1115 Choral Mattins
- T 13** 1000 Said Holy Communion (Lady Chapel)
 1305 Lunchtime Bach Organ Recital
- Th 15** 1000 St Mary's Toddler Group (Hall)
 1445 Bereavement Café
- S 17** 1930 Organ Recital - Jonathan Holmes plays Max Reger
- S 18 TRINITY 2 (Father's Day)**
 0800 Said Holy Communion (Lady Chapel)
 0930 Jesus and Me (JAM) (Hall then Church)
 0930 Sung Holy Communion
 1730 Choral Evensong
- T 20** 1000 Said Holy Communion (Lady Chapel)
- W 21** 2000 Quiz on Zoom
- Th 22** 1000 St Mary's Toddler Group (Hall)
- S 24** 1430-1630 Garden Party at the Vicarage
- S 25 TRINITY 3**
 0800 Said Holy Communion (Lady Chapel)
 0930 Jesus and Me (JAM) (Hall then Church)
 0930 Sung Holy Communion
 1115 Holy Baptism
- T 27** 1000 Said Holy Communion (Lady Chapel)
- Th 29** 1000 St Mary's Toddler Group (Hall)

Improving homes inside and out

Oakdene Home Services

Home Maintenance
 Painting & Decorating, Gardening & General DIY

Roger Phillips

TELEPHONE: 07831 663 323
 EMAIL: oakdenehomeservices@gmail.com

Make the switch.

It's hard to get your head around the cost of energy. Most of us are hawkishly watching our smart meters, monitoring what we can turn on – all the while trying not to think about winter. We offer certainty and stability. Our modern, self-contained apartments and all-inclusive rent reviewed just once a year provide the peace of mind you need to live your best life in later years and put you back in control of your finances.

Leading the way in retirement rental living



Scan the code or visit the website:



Lower Mill Apartments

Ewell Village, Surrey

www.birchgrove.life/switch



Priory Court Care Home

Your Future Matters

Part of the Future Care Group

If you are looking for a local care home
 "Where your Future Matters"
 Look no further than
 Priory Court in Ewell Village, Epsom

Please feel welcome to visit anytime or call to speak to one of our friendly team to discuss your care needs

Tel: 020 8393 0137
www.futurecaregroup.com

OBSERVATIONS

Kindness is a language that the deaf can hear and the blind can see

When we take least notice of our good deeds ourselves, God takes most notice of them